



Micro Franchise Model Vegetable Products



TELANGANA STATE FOOD
PROCESSING SOCIETY



Vaccum Frying Unit - 50kg Batch - per hour



Investment – Rs. 15 Lakhs

Civil – 3 lakhs, Plant & Machinery – Rs. 10.5 lakhs, Power Connection- 1 lakh, Furniture and Fixture – 0.2 lakh, Spares – 0.2 lakh, Contingency – 0.1 lakh.

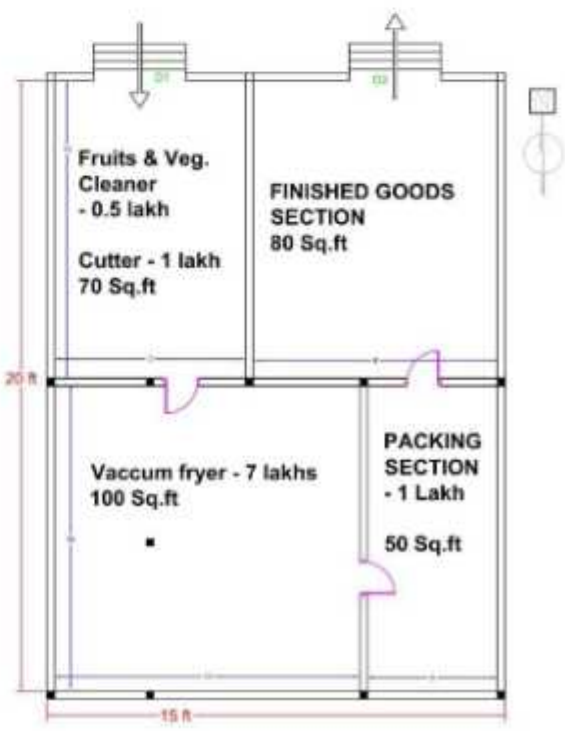
Monthly Operational Expenses (60% utilization)

Revenue (50 Kg fries/day x Rs. 100 x 25 days)		1.25 lakhs
Cost		
Labor	Rs.	30,000
Electricity	Rs.	5,000
Miscellaneous	Rs.	2,000
Net monthly expenses	Rs.	37,000
Term loan repayment	Rs.	18,000
Net monthly income (Revenue - Cost)	Rs	0.70 lakhs

 **Bank Loan - Rs. 8.25 lakhs**

 **Promoters Equity Rs.1.50 lakhs**

 **Subsidy Rs. 5.25 lakhs**





Pickles Unit – 100 Kg per day



Investment – Rs 15.5 Lakhs

Civil – 10 lakhs, Plant & Machinery – Rs. 4.5 lakhs, Power Connection- 0.5 lakh, Furniture and Fixture – 0.3 lakh, Spares – 0.1 lakh, Contingency – 0.1 lakh.

Monthly Operational Expenses (60% utilization)

Revenue (100 Kg per day x Rs. 100 x 25 days)	2.50 lakhs
Cost	
Labor	Rs. 50,000
Electricity	Rs. 3,000
Miscellaneous	Rs. 4,500
Net monthly expenses	Rs. 57,500
Term loan repayment	Rs. 18,000
Net monthly income (Revenue - Cost)	Rs 1.75 lakhs



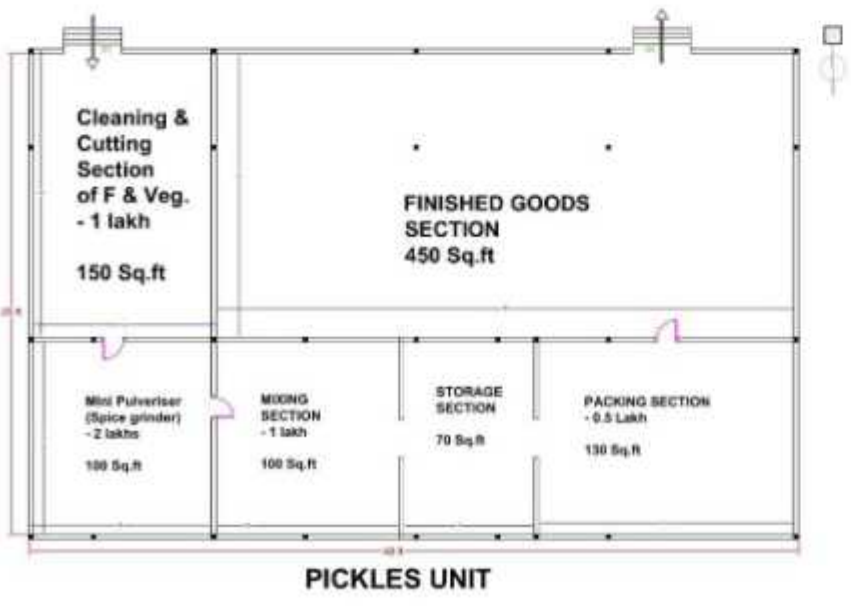
Bank Loan - Rs. 8.53 lakhs



Promoters Equity Rs. 1.55 lakhs



Subsidy Rs. 5.43 lakhs



Micro Franchises - Vegetable Units

S. No	Description	Fryer Unit	Pickles Unit
1	Investment (Rs. Lakhs)	15	15.5
2	Own contribution (Rs. Lakhs)	1.50	1.55
3	Bank Loan (Rs. Lakhs)	8.25	8.53
4	Government (Grant in-aid) (Rs. Lakhs)	5.25	5.43
5	Land Requirement in (Sq. ft)	300	1000
6	Monthly Income (Rs. Lakhs)	0.70	1.75

Civil as per FSSAI

Machinery from
Empanelled Suppliers

Quality and Food Safety
norms to be maintained

