



Micro Franchise Model

Milk Based Products



TELANGANA STATE FOOD
PROCESSING SOCIETY

Ice Cream Making Unit- 50 Kg per hour



Investment – Rs. 38 Lakhs

Civil – 15 lakhs, Plant & Machinery – Rs. 20 lakhs, Power Connection- 2 lakh, Furniture and Fixture – 0.3 lakh, Spares – 0.35 lakh, Contingency – 0.35 lakh.

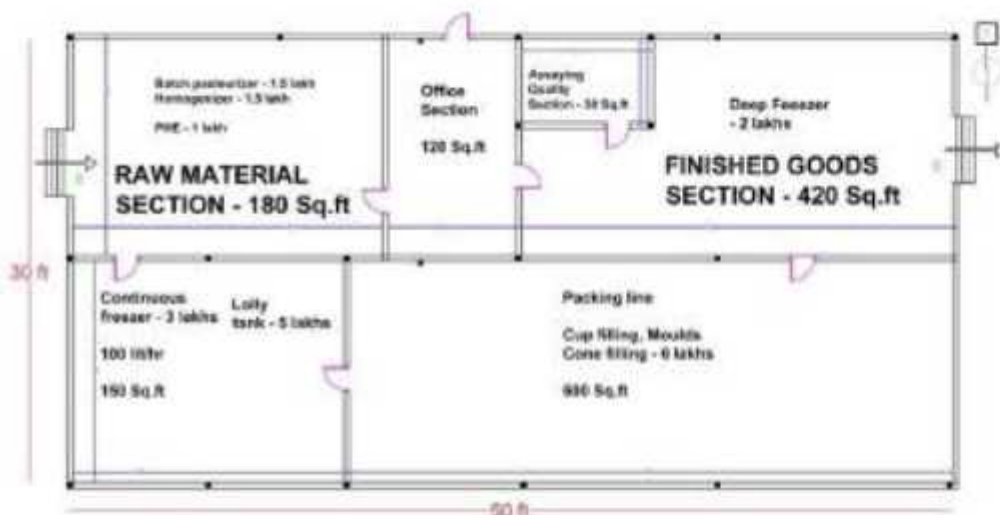
Monthly Operational Expenses (60% utilization)

Revenue (240 x Rs. 30 x 25 days)	1.8 lakhs
Cost	
Labor	Rs. 10,000
Electricity	Rs. 5,000
Miscellaneous	Rs. 1,000
Net monthly expenses	Rs. 16,000
Term loan repayment	Rs. 5,000
Net monthly income (Revenue - Cost)	Rs. 1.59 lakhs

 Bank Loan - Rs. 24.20 lakhs

 Promoters Equity Rs.3.80 lakhs

 Subsidy Rs. 10 lakhs



ICE CREAM UNIT



Paneer Making unit - 50 Kg per hour



Investment – Rs 22.0 Lakhs

Civil – 5 lakhs, Plant & Machinery – Rs. 14 lakhs, Power Connection- 1.4 lakh, Furniture and Fixture – 0.9 lakh, Spares – 0.51 lakh, Contingency – 0.19 lakh.

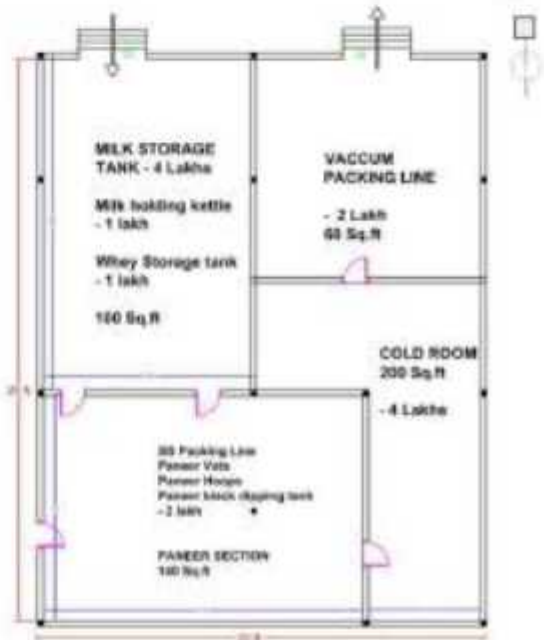
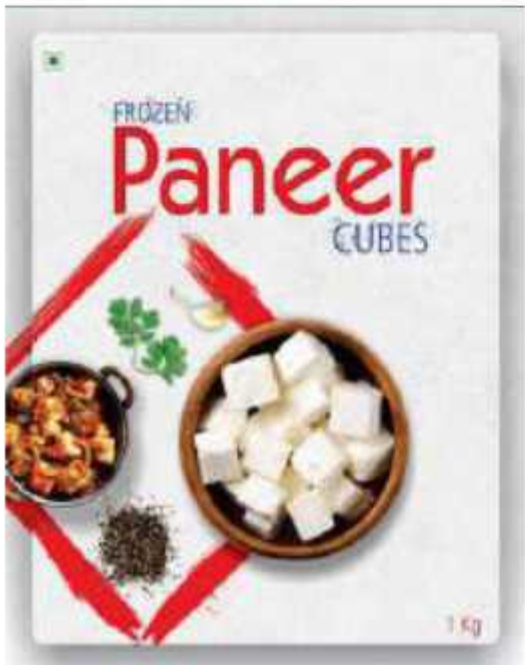
Monthly Operational Expenses (60% utilization)

Revenue (240 x Rs. 12 x 25 days)		0.72 lakhs
Cost		
Labor	Rs.	10,000
Electricity	Rs.	6,000
Miscellaneous	Rs.	3,000
Net monthly expenses	Rs.	19,000
Term loan repayment	Rs.	5,000
Net monthly income (Revenue - Cost)	Rs	0.48 lakhs

 **Bank Loan - Rs. 12.10 lakhs**

 **Promoters Equity Rs. 2.20 lakhs**

 **Subsidy Rs. 7.70 lakhs**



PANEER UNIT

Milk Processing Unit – 500 litres/hr



Investment – Rs 18.0 Lakhs

Civil – 5 lakhs, Plant & Machinery – Rs. 10 lakhs, Power Connection- 1.4 lakh, Furniture and Fixture – 0.9 lakh, Spares – 0.51 lakh, Contingency – 0.19 lakh.

**Monthly Operational Expenses
(60% utilization)**

Revenue (240 x Rs. 5 x 25 days)		1.50 lakhs
Cost		
Labor	Rs.	15,000
Electricity	Rs.	8,000
Miscellaneous	Rs.	5,000
Net monthly expenses	Rs.	33,000
Term loan repayment	Rs.	9,000
Net monthly income (Revenue - Cost)	Rs	1.13 lakhs



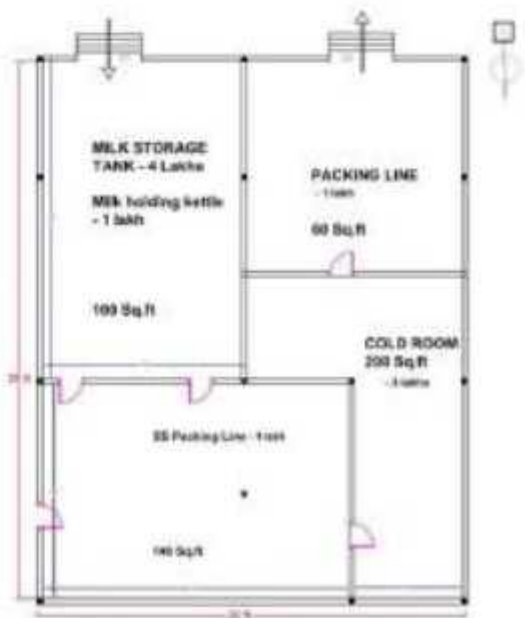
Bank Loan - Rs. 9.90 lakhs



**Promoters Equity
Rs. 1.80 lakhs**



Subsidy Rs. 6.30 lakhs



MILK PROCESSING UNIT



Make in
Telangana



Telangana State Food Processing Society

Dept. of Industries, Telangana

KVIB Building, 2nd, Masab Tank, Hyderabad, Telangana - 500022
Phone: 040 2331 9273

Micro Franchises - Milk based Units

S. No	Description	IceCream Making unit	Paneer Making unit	Milk Processing Unit
1	Investment (Rs. Lakhs)	38	22	18
2	Own contribution (Rs. Lakhs)	3.80	2.20	1.80
3	Bank Loan (Rs. Lakhs)	24.20	12.10	9.90
4	Government (Grant in-aid) (Rs. Lakhs) *	10.00	7.70	6.30
5	Land Requirement in (Sq. ft)	1500	500	500
6	Monthly Income (Rs. Lakhs)	1.59	0.48	0.53

* Maximum grant in aid is 10 lakhs

Civil as per FSSAI

Machinery from Empanelled Suppliers

Quality and Food Safety norms to be maintained

